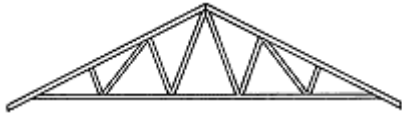
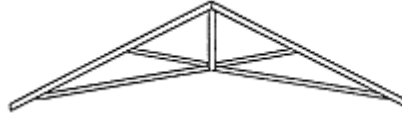




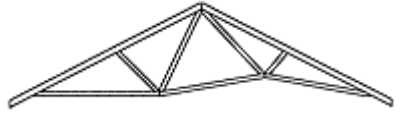
W-takstol  
Husbredde: 4-12 m



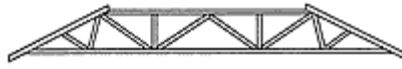
Salttakstol for større spennvidder  
Husbredde: maks. 25 m



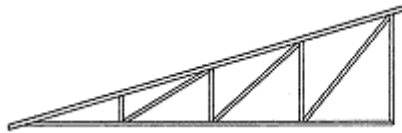
Salttakstol med mønt himling  
Husbredde: maks. 25 m



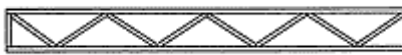
Salttakstol, asymmetrisk med mønt himling  
Husbredde: 6-10 m



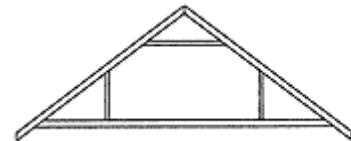
Valmtakstol  
Husbredde: maks. 20 m



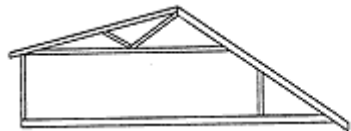
Pulltakstol  
Husbredde: 4-12 m



Gitterdrager  
Husbredde: maks. 25 m



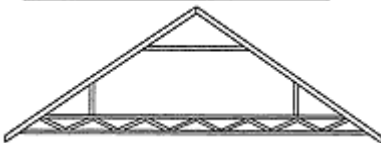
Loftrumstakstol  
Husbredde: 6-10 m



Loftrumstakstol for takopplett  
Husbredde: 7-15 m



Loftrumstakstol med rafte høyde  
Husbredde: 6-10 m



Lofttakstol for frie spenn  
Husbredde: 10-20 m